

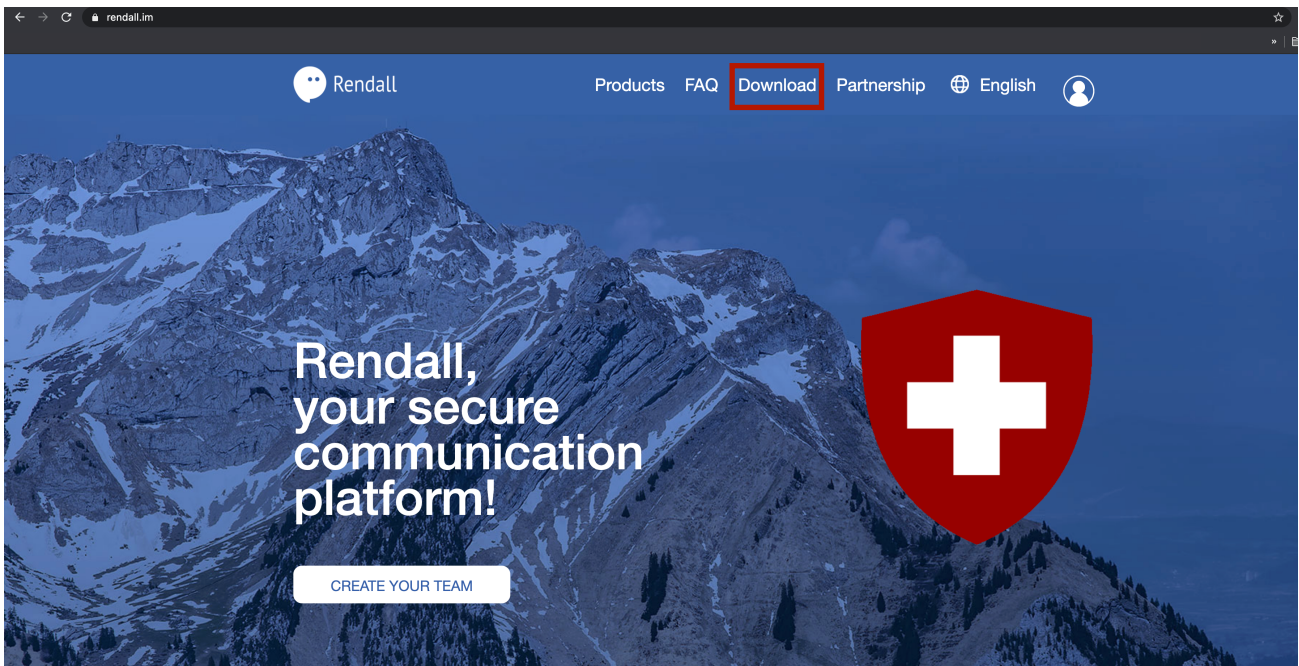


## **Rendall Desktop**

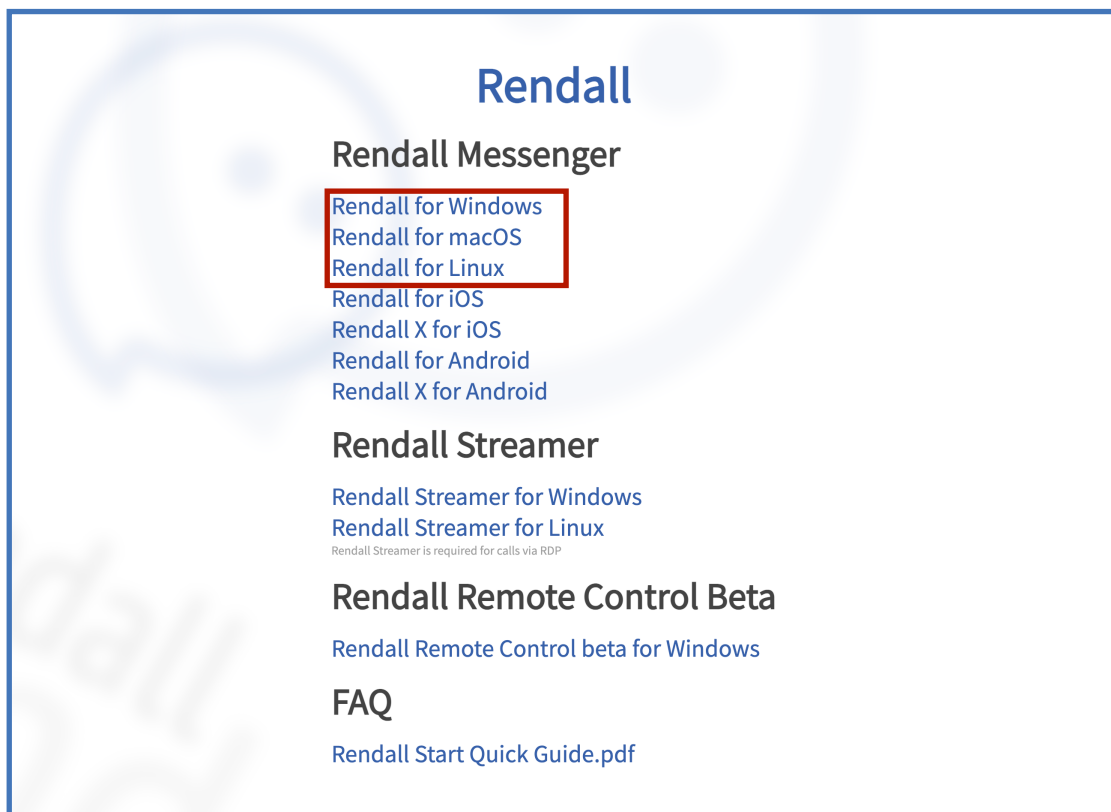
Downloading and installing the application on Windows.  
Authorization and registration in Rendall

## Downloading Rendall from official website

Go to the website <https://rendall.im> and then click «Download».

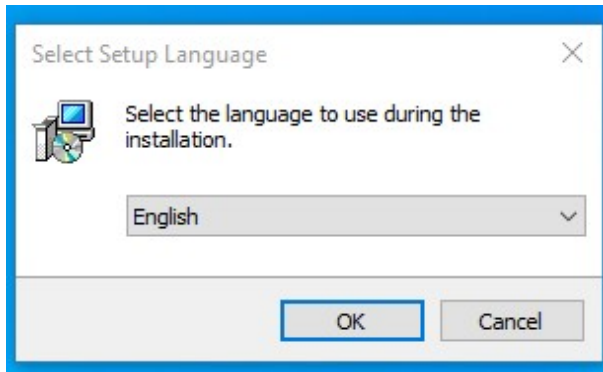


On the page that appears, select your OS and then click on it.

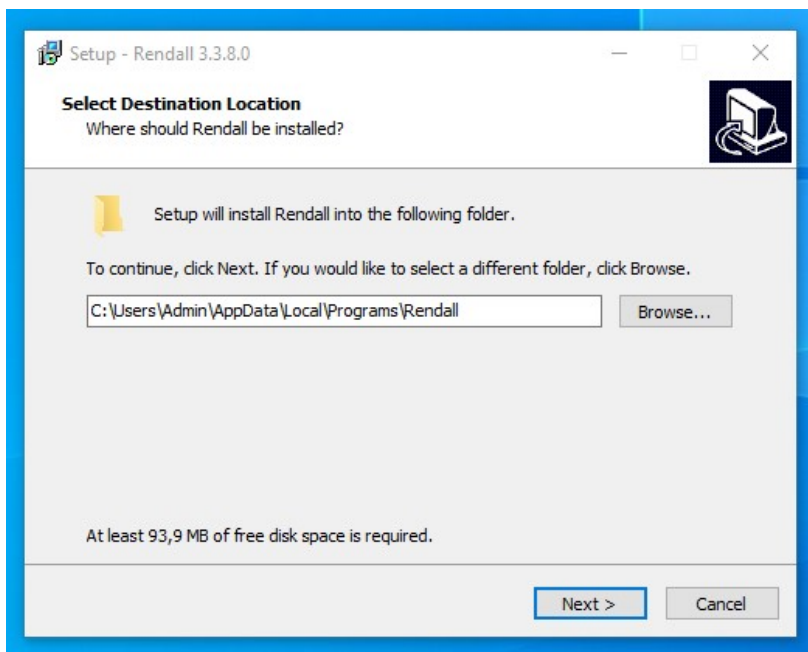


## Installing Rendall on Windows

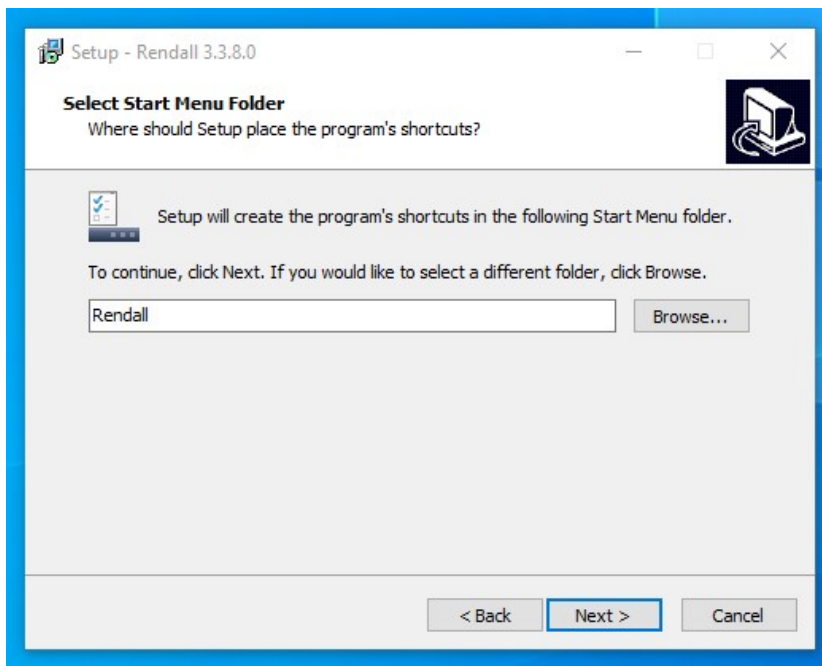
1. Choose the language of an installation and then click «OK».



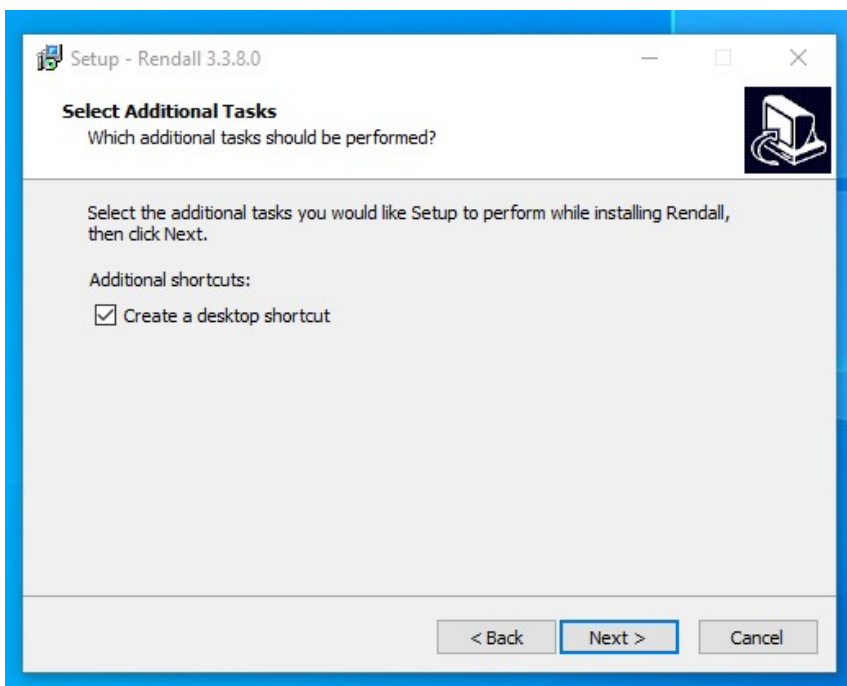
2. Select the folder where Rendall will be installed and click «Next».



3. Then you will need to select the folder in the Start menu where the application shortcut will be stored. Click «Browse...» if you want to change the folder and then click «Next».

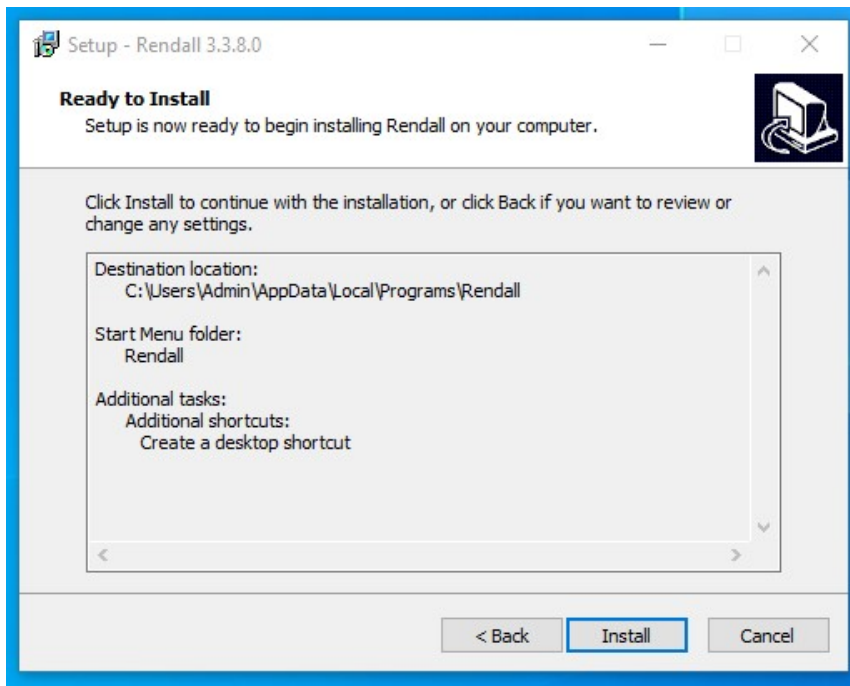


4. Click on the checkbox if you want to display the application shortcut on the desktop. Click «Next».

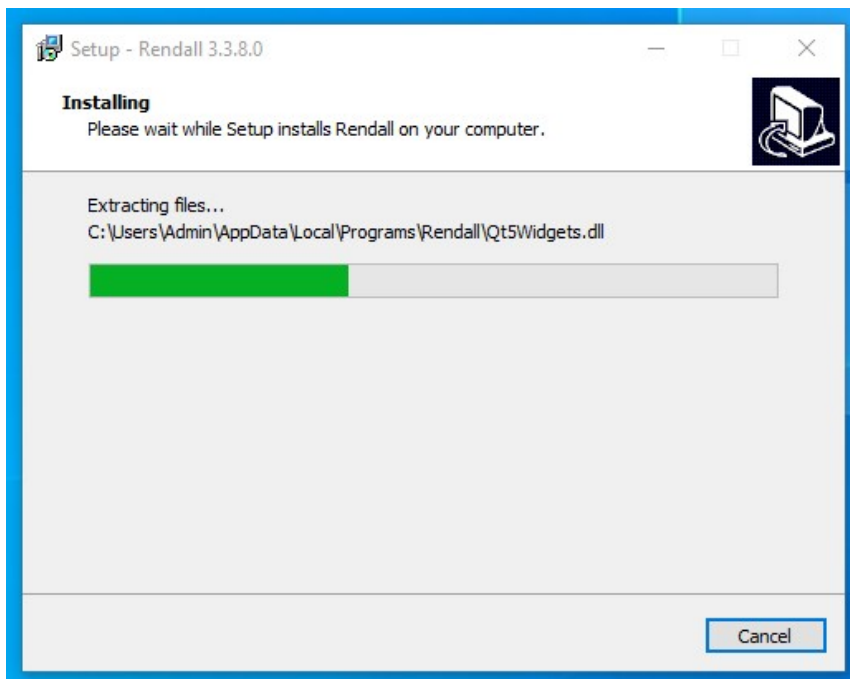


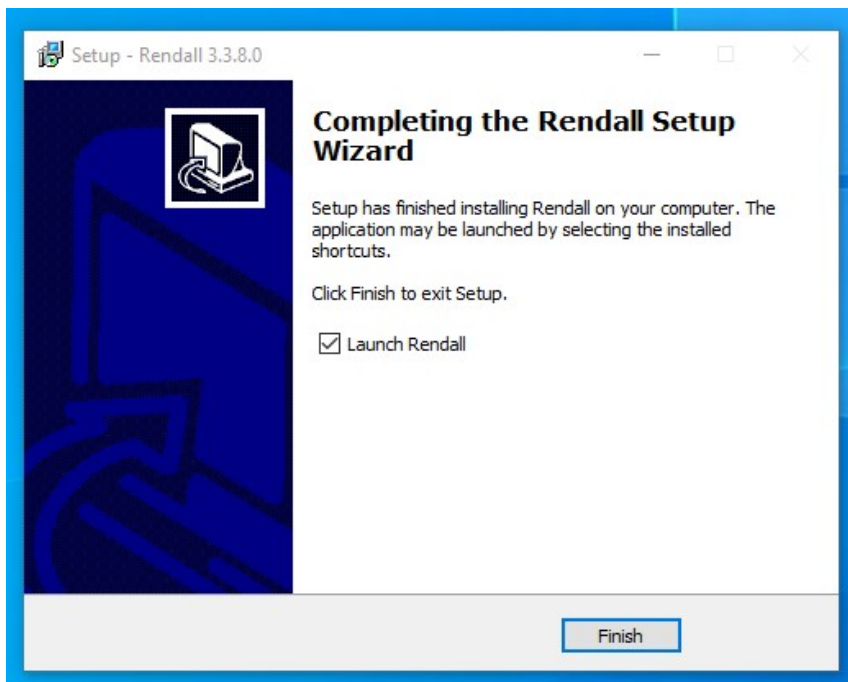


5. Before starting the installation, check if all parameters are correct. If everything is right, click "Install".



6. Wait until the installation is complete, then you will be prompted to launch Rendall. Click «Finish».

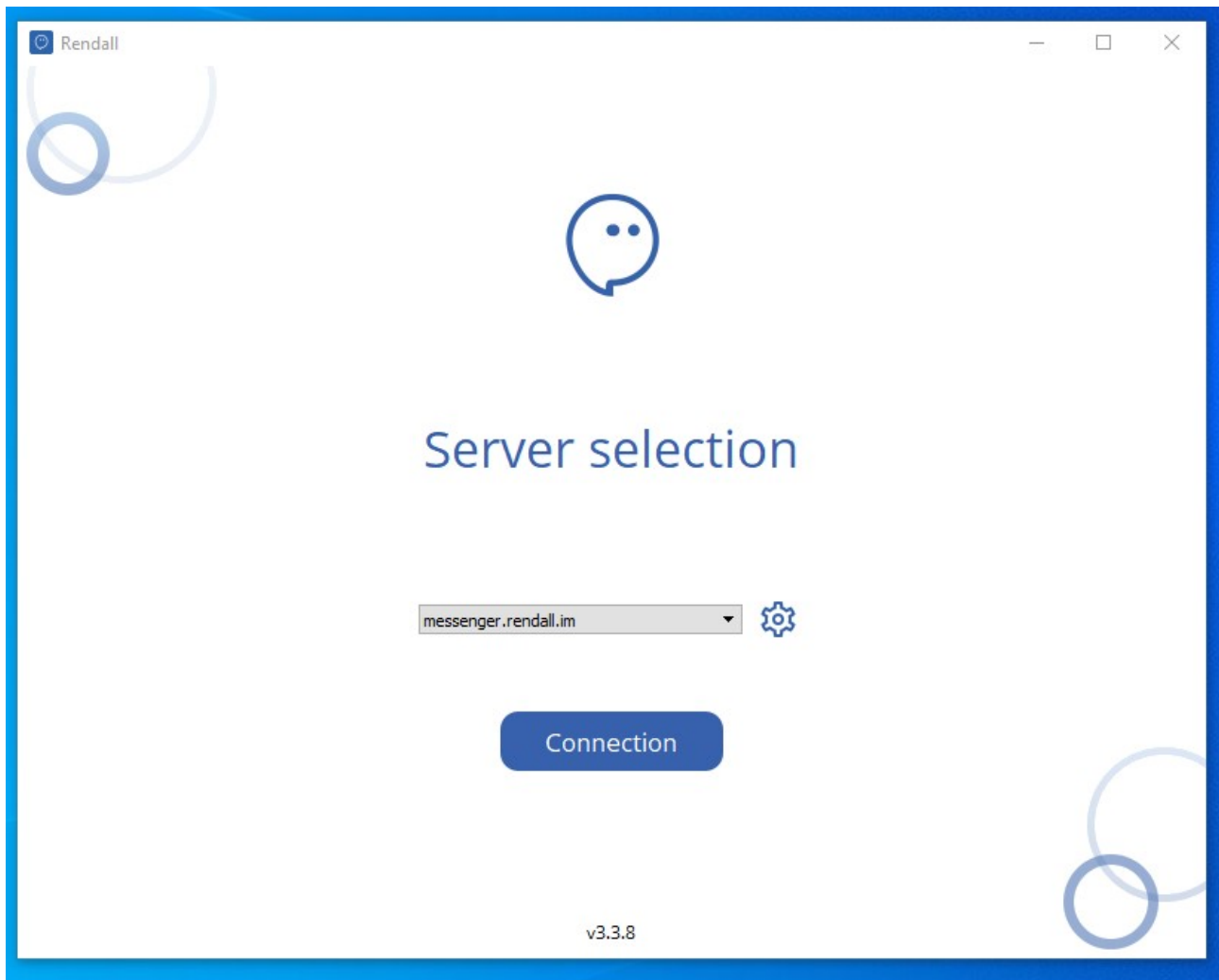




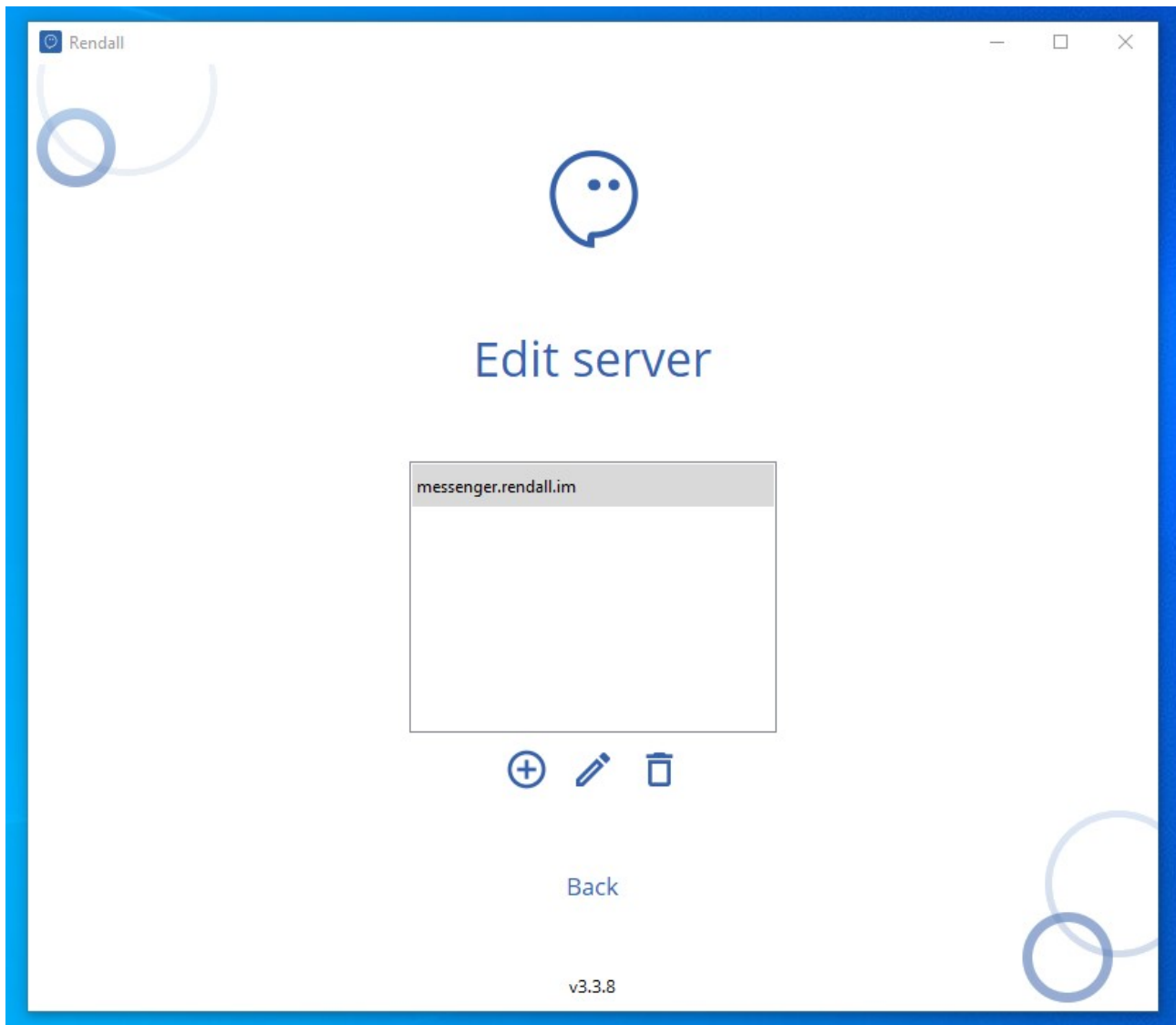
## Authorization and registration in Rendall

Once you have launched Randall, you will need to connect to the server. Server address is “messenger.rendall.im” by default. If you have a different server address, click on the "Gear" icon and add it to the server list.

To connect to the server click "Connection".

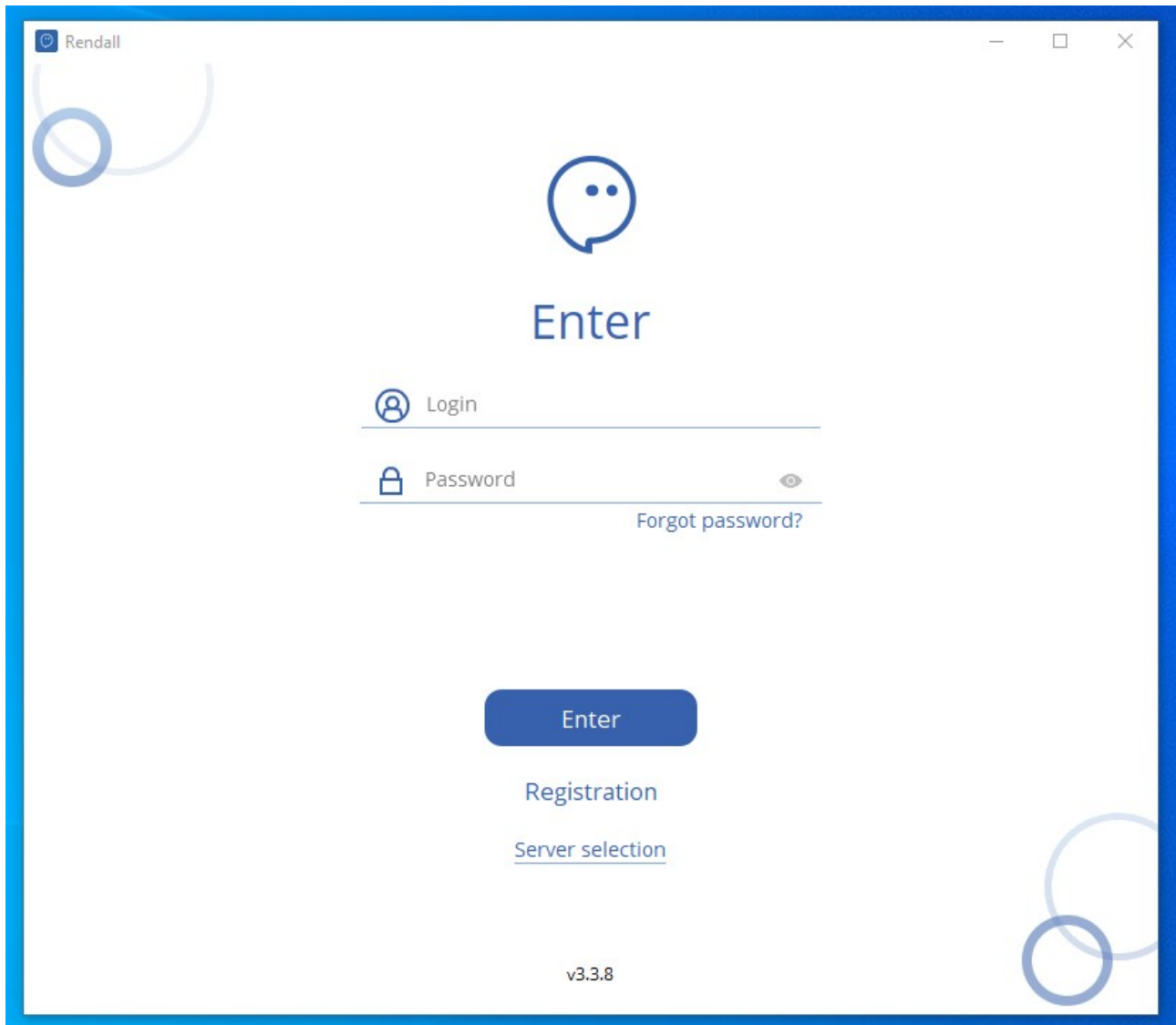


If you have a different server address, click on "Gear" icon. Click on "Plus" icon to add new server. Once you add your server, click on "Back", then choose your server and click on "Connection" button.



After connecting to the server you can enter with the login / password which you should receive from the creator of your team.

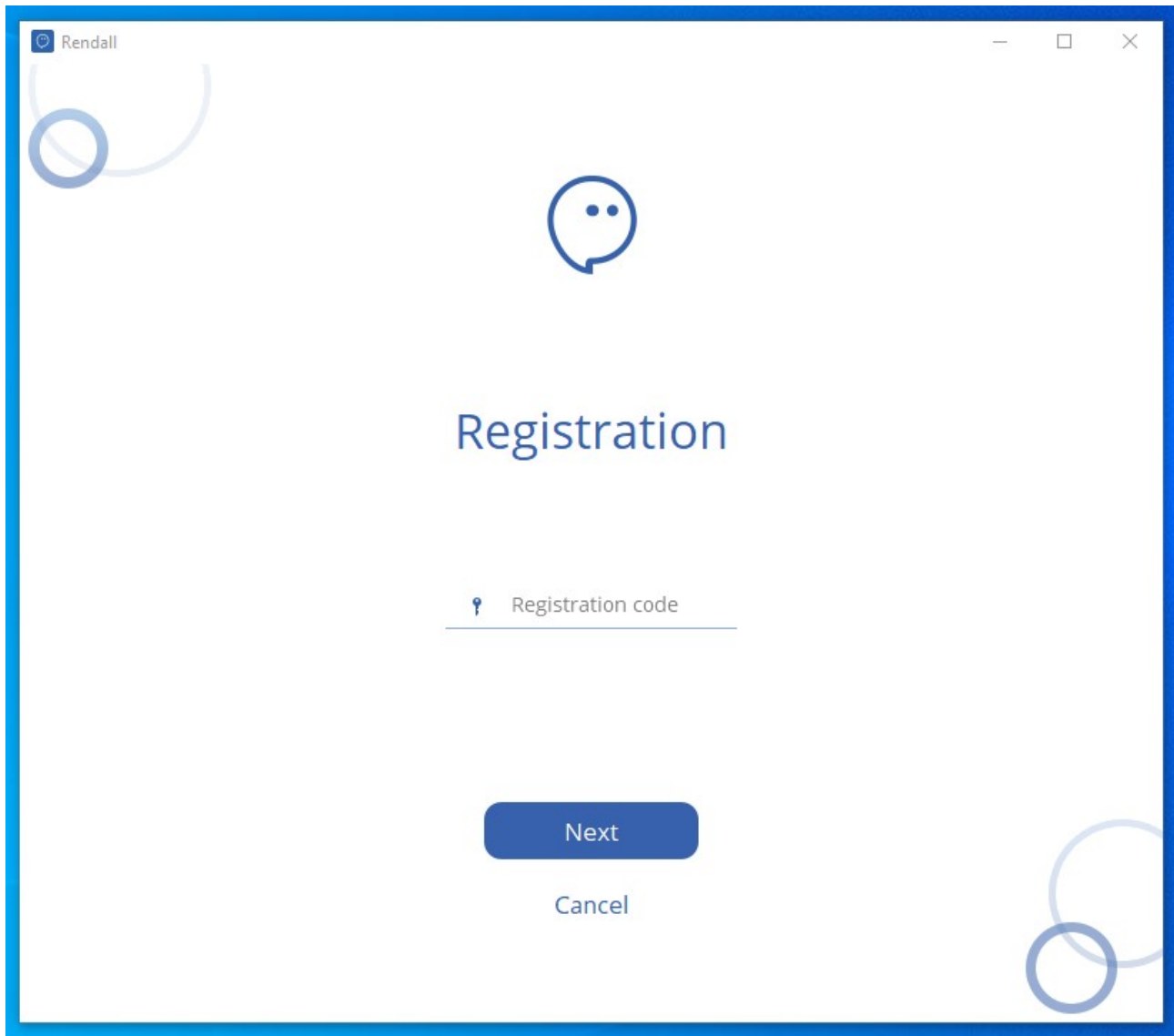
If you already have a login / password, enter it in the appropriate fields and click “Enter”.

A screenshot of a web application window titled "Rendall". The window has a blue border and standard window controls (minimize, maximize, close) in the top right corner. The main content area is white. At the top center, there is a blue speech bubble icon with two dots inside. Below it, the word "Enter" is displayed in a large, blue, sans-serif font. Underneath "Enter", there are two input fields. The first field is labeled "Login" with a blue user icon to its left. The second field is labeled "Password" with a blue padlock icon to its left and a blue eye icon to its right, indicating a password field. Below the password field, there is a link that says "Forgot password?". At the bottom center, there is a blue button with the word "Enter" in white. Below the button, there are two links: "Registration" and "Server selection", both in a smaller, blue, sans-serif font. At the very bottom center, the version number "v3.3.8" is displayed in a small, grey, sans-serif font. There are decorative blue circular patterns in the top left and bottom right corners of the window.

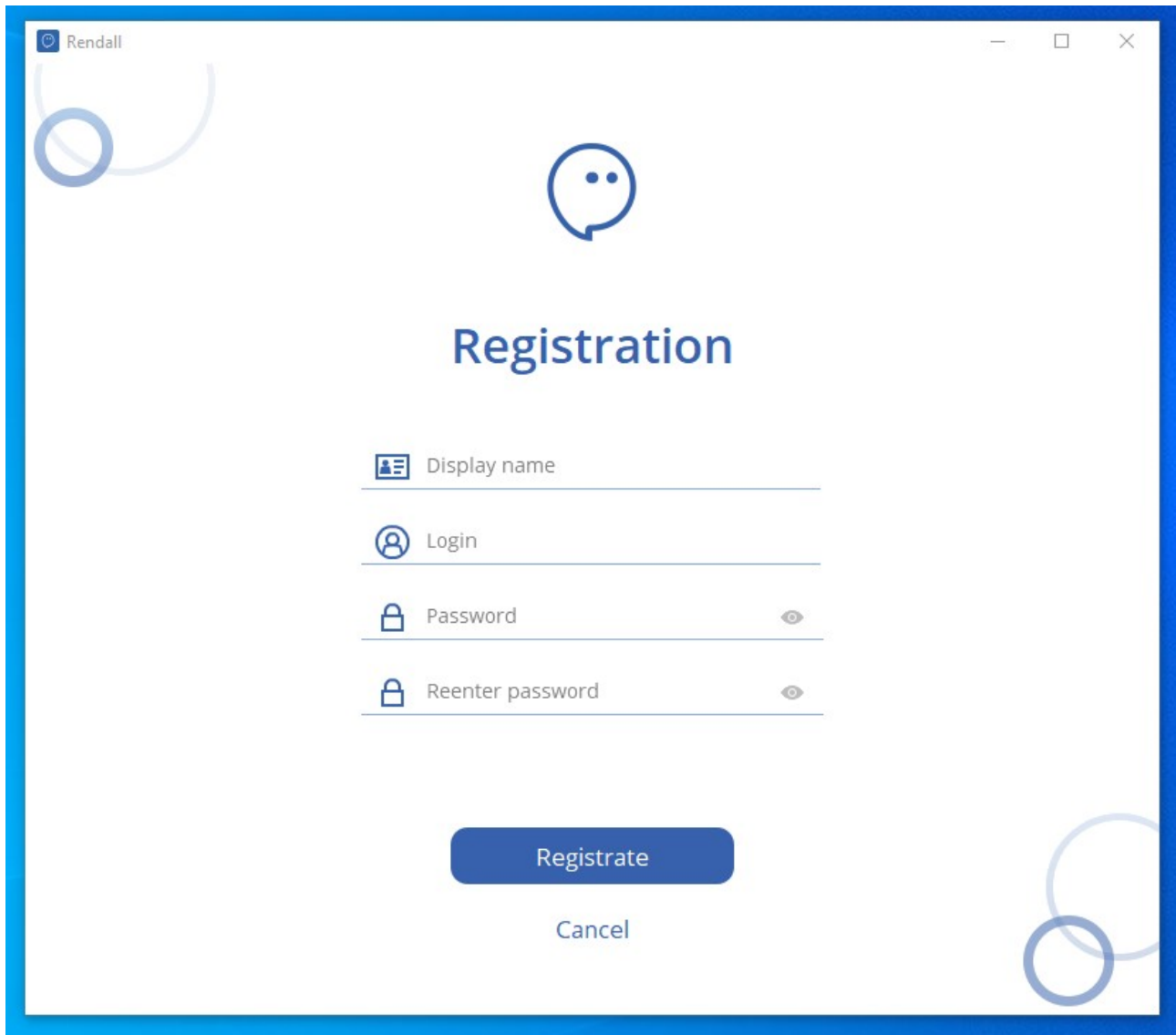
If you don't have an account, click on the "Registration" button. On the new screen you should enter registration code.

If you do not have it, ask the creator of your team for it or become the creator of your team yourself on Rendall website by following this link:  
<https://my.rendall.im/auth/signin>

If you have a registration code, enter it and click "Next".

A screenshot of a web application window titled "Rendall". The window has a blue border and standard window controls (minimize, maximize, close) in the top right corner. The main content area is white. At the top left, there is a decorative graphic of two overlapping circles. In the center, there is a blue speech bubble icon with two dots inside. Below the icon, the word "Registration" is displayed in a large, blue, sans-serif font. Underneath, there is a text input field with a small key icon on the left and the placeholder text "Registration code". Below the input field, there are two buttons: a blue button with the text "Next" and a white button with the text "Cancel". At the bottom right, there is another decorative graphic of two overlapping circles.

After entering the registration code, fill in the “Display Name”, "Login" fields and also your password. After that click “Registrate”.



The image shows a registration form window titled "Registration". The window has a blue border and a title bar with the name "Rendall". The form contains four input fields: "Display name", "Login", "Password", and "Reenter password". Each field has a corresponding icon (a person for name and login, and a lock for passwords) and a toggle eye icon for the password fields. Below the fields are two buttons: "Registrate" (a blue button) and "Cancel" (a text link). The window also features decorative blue circles in the corners.

Registration

Display name

Login

Password

Reenter password

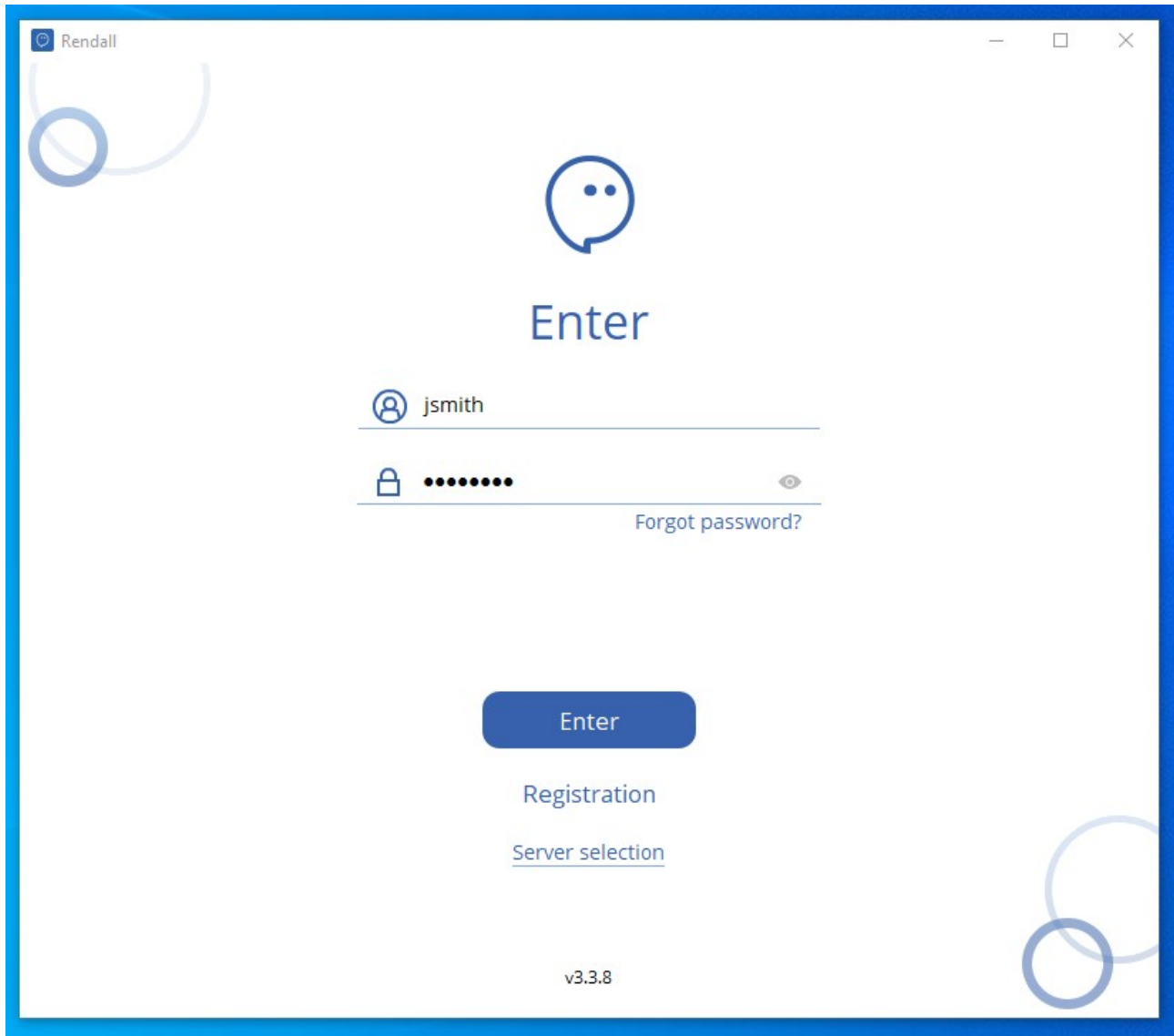
Registrate

Cancel



Once you finished registration, you will be taken to the login screen. If you already have an account, enter its login and password and click “Enter”.

Welcome to Rendall!

The image shows a login window titled "Rendall" with standard window controls. The interface is clean and modern, featuring a blue speech bubble icon with two dots inside, positioned above the word "Enter" in a large, blue, sans-serif font. Below this, there are two input fields. The first field has a user icon on the left and contains the text "jsmith". The second field has a lock icon on the left, contains seven black dots, and has an eye icon on the right to toggle password visibility. A link labeled "Forgot password?" is located to the right of the password field. A prominent blue button with the text "Enter" is centered below the input fields. Underneath the button are two links: "Registration" and "Server selection", with the latter being underlined. At the bottom center of the window, the version number "v3.3.8" is displayed. The background of the window is white, with faint blue circular graphics in the corners.